

# BIOMAP.photo

The **BIOMAP.photo** imaging system has been developed to interpret photos of the customer in order to take accurate measurements of their body, to produce an ARGONAUT 2.0 drysuit. The **BIOMAP** system enables accurate prediction of the correct standard size, or creates a bespoke pattern for a made to measure suit.

You will need to have created an online dealer account in order to be able to upload photos, use our Argonaut Online Tools (including the Drysuit Designer) and order a suit online.

If you have not been sent a link to activate your account, please contact your sales office to enquire about becoming an Argonaut Dealer. If you are already an Argonaut dealer, please contact your sales office for a reminder email.

Once registered, log on to the online tools and follow links to your dealer account to place an order. In this process, you will be asked to submit photos for **BIOMAP.photo**.

[Login at argonaut.fourthelement.com](http://argonaut.fourthelement.com)

## How to take pictures for BIOMAP.photo

### YOU WILL NEED:

The **BIOMAP** footplate

Tight fitting clothes for your customer (e.g. J2 base layers)

Camera (minimum resolution: 5MPixel) or iPad (iPad3 or iPad Air) or similar tablet mounted on a tripod / stand or a steady surface

### PREPARATION:

Use the **BIOMAP** footplate rectangle for the model to stand on.

The **BIOMAP** footplate rectangle must be on level ground.

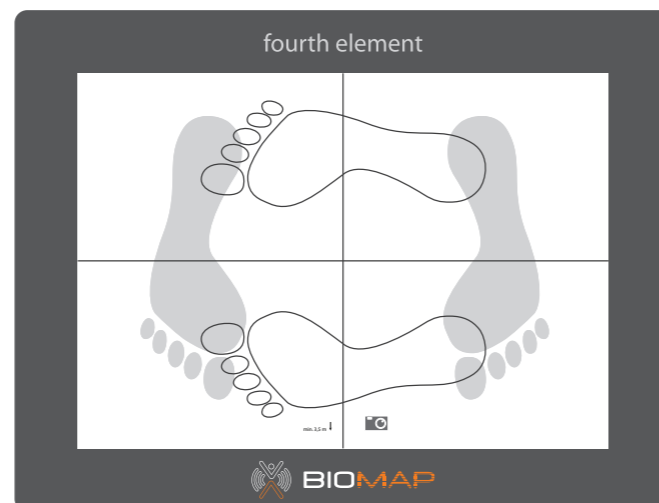
Ensure good contrast between model and background. Ideally dark baselayer garments on a light background. Model must not be backlit.

Camera distance to model: approximately 11.5ft / 3.5m directly in front of model.

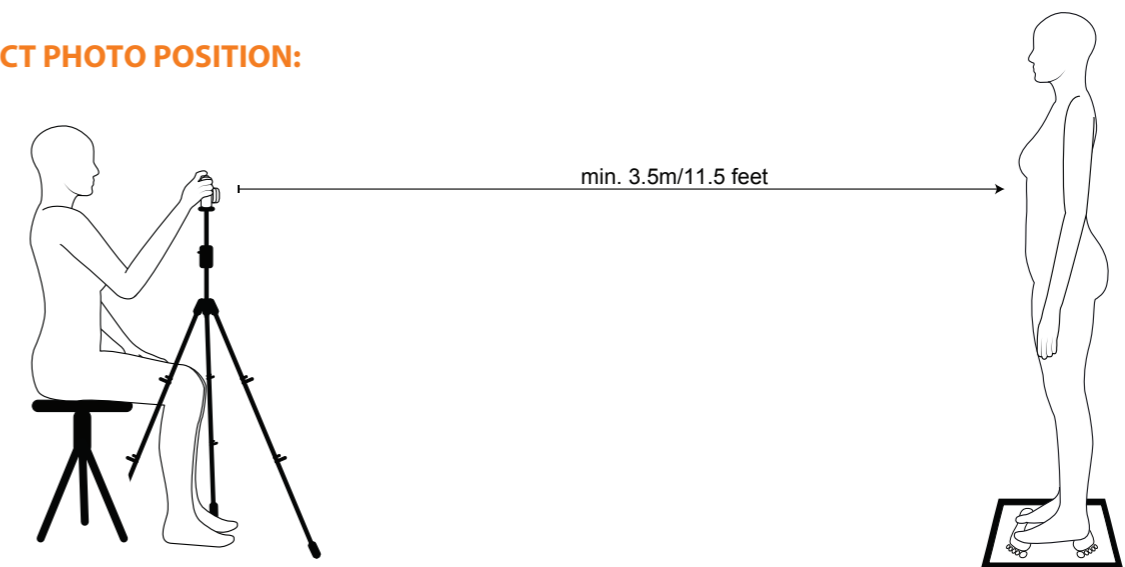
Camera height: approximately 4in / 10cm above navel level on a tripod or steady surface.

Camera must remain in exactly the same position for both photos.

A vertical straight line must be visible in the photo to the side of the model such as a door frame or plumb line.



### CORRECT PHOTO POSITION:



### MODEL:

The model should wear close fitting / non padded garments such as base layers. We recommend J2.

The neck must be visible with long hair pulled / tied up.

Model should wear bare feet or socks and **MUST NOT** wear shoes.

### PHOTOGRAPHY:

The model should stand exactly on the centre of the **BIOMAP** footmat (as footprint guide).

All corners of the sheet must be visible.

A vertical straight line must be visible in the photo to the side of the model such as a door frame or plumb line.

**Front view:** With arms straight, hands should be held about 7.5 inches / 20 cm to the side away from the thighs.

**Side view:** Hold the arms / hands exactly the same way as in the front view photo.

**Important Note:** Be sure that no part of the side away from the camera is visible (e.g. only the nearest leg should be visible, and only the arm nearest the camera should be visible)

The model should be in the centre of the photo. Zoom is permitted.

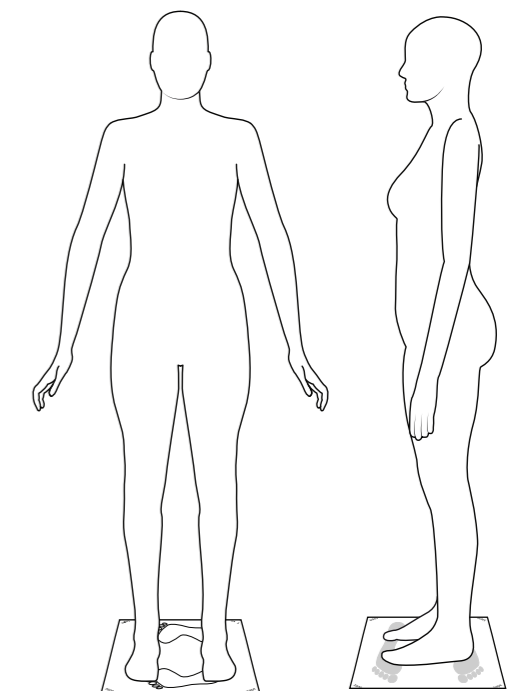
### CHECKING THE RESULTS:

Check the reference rectangle and the person are both completely visible in the photo.

Check that the photo is in focus and the visibility of straight line to the side of the model.

Save the photos. We suggest using the customer's name in the filename, for future reference.

**Important Note:** Do not edit and/or compress the photos.



1. Hands about 7.5 in/ 20 cm out to the side of the thigh.
2. Hands the same as in photo 1.